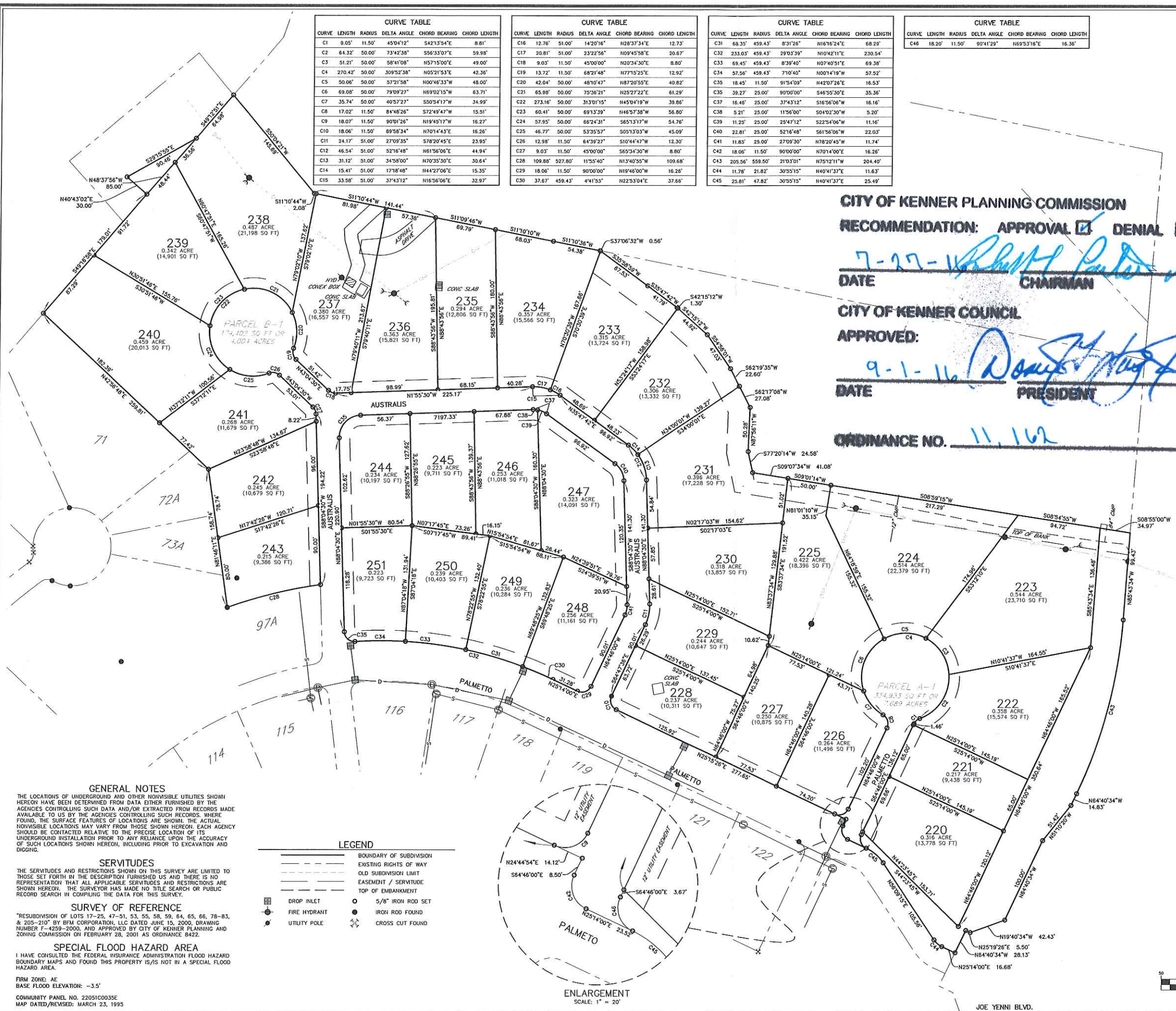
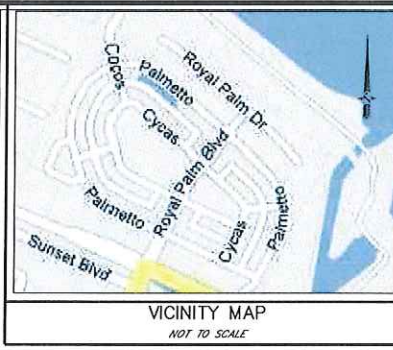


PUD-5-16



Four CURVE TABLES with columns: CURVE LENGTH, RADIUS, DELTA ANGLE, CHORD BEARING, CHORD LENGTH. Tables C1-C15, C16-C20, C21-C25, C26-C30, C31-C35, C36-C40, C41-C45.



REGISTERED PROFESSIONAL LAND SURVEYOR JOHN S. TEGARDEN REGISTRATION NO. 4625

CITY OF KENNER PLANNING COMMISSION

RECOMMENDATION: APPROVAL DENIAL

DATE 7-27-11 CHAIRMAN

CITY OF KENNER COUNCIL

APPROVED: 9-1-11 PRESIDENT

ORDINANCE NO. 11,162

PARENT TRACT LEGAL DESCRIPTION COMMENCING (P.O.B.) AT THE NORTHWEST CORNER OF THE INTERSECTION OF WILLIAMS BOULEVARD AND JOE YENNI BOULEVARD...

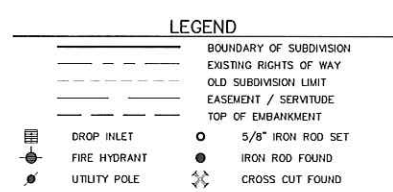
SAID CURVE (C1) TURNING TO THE RIGHT, HAVING A RADIUS OF 59.50 FEET AND A LENGTH OF 205.58 FEET, THE CHORD OF WHICH BEARS N75°11'11"W FOR A DISTANCE OF 204.40 FEET. THENCE N64°40'34"W FOR A DISTANCE OF 14.83 FEET; THENCE N51°10'20"W FOR A DISTANCE OF 51.42 FEET; THENCE N64°40'34"W FOR A DISTANCE OF 100.00 FEET; THENCE N10°40'34"W FOR A DISTANCE OF 42.43 FEET; THENCE N25°19'26"W FOR A DISTANCE OF 5.50 FEET; THENCE N64°40'34"W FOR A DISTANCE OF 28.13 FEET; THENCE N25°14'00"E FOR A DISTANCE OF 16.68 FEET TO THE BEGINNING OF A CURVE.

GENERAL NOTES THE LOCATIONS OF UNDERGROUND AND OTHER NONVISIBLE UTILITIES SHOWN HEREON HAVE BEEN DETERMINED FROM DATA EITHER FURNISHED BY THE AGENCIES CONTROLLING SUCH DATA AND/OR EXTRACTED FROM RECORDS MADE AVAILABLE TO US BY THE AGENCIES CONTROLLING SUCH RECORDS...

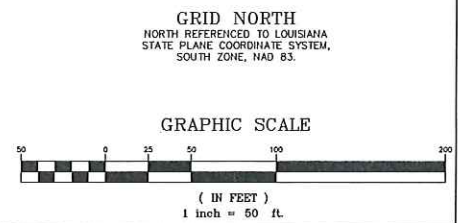
SERVITUDES THE SERVITUDES AND RESTRICTIONS SHOWN ON THIS SURVEY ARE LIMITED TO THOSE SET FORTH IN THE DESCRIPTION FURNISHED US AND THERE IS NO REPRESENTATION THAT ALL APPLICABLE SERVITUDES AND RESTRICTIONS ARE SHOWN HEREON...

SURVEY OF REFERENCE "RESUBDIVISION OF LOTS 17-25, 47-51, 53, 55, 58, 59, 64, 65, 66, 78-83, & 205-210" BY BFM CORPORATION, LLC DATED JUNE 15, 2000, DRAWING NUMBER F-4259-2000, AND APPROVED BY CITY OF KENNER PLANNING AND ZONING COMMISSION ON FEBRUARY 28, 2001 AS ORDINANCE 8422.

SPECIAL FLOOD HAZARD AREA I HAVE CONSULTED THE FEDERAL INSURANCE ADMINISTRATION FLOOD HAZARD BOUNDARY MAPS AND FOUND THIS PROPERTY IS/IS NOT IN A SPECIAL FLOOD HAZARD AREA.



ENLARGEMENT SCALE: 1" = 20'



RESUBDIVISION OF LOT A-1 & B-1 GABRIEL SUBDIVISION INTO LOTS 220 THROUGH 251 CITY OF KENNER, JEFFERSON PARISH, LA.

Table with columns: REVISED, CORRECTED, ADDED, REMOVED, WORK, DATE. Includes revision history and scale information.